

Creative

DRAWings®

Where Embroidery Magic Begins...



Welcome to the Creative DRAWings® April 2011 Newsletter.



Spring is in the Air. Flowers are blooming and Creative DRAWings® wants to keep you up to date with news, information and techniques about your software.

News!

Thank You

Thanks to everyone who came out and visited us at our Spring Shows! It was great to visit with you. We had lots of fun showing off the Creative DRAWings software. Plus we got many ideas about what you would like to know next. Keep an eye on the website and our Facebook page to see new projects and lessons.

Webinar – Date Change!!!

The May webinar has new dates! The new dates are May 19 at 10 am CDT or 5 pm CDT. Sign up for your slot by emailing info@Creative-DRAWings.com with the date and time slot request in the subject line. Remember in May we will be talking about **Lettering**.

June's webinar will be about using the **Edit Shapes Nodes** tool.



www.Creative-DRAWings.com



Subscribe to our channel on YouTube!



Creative DRAWings® videos appear here.



Let us Know

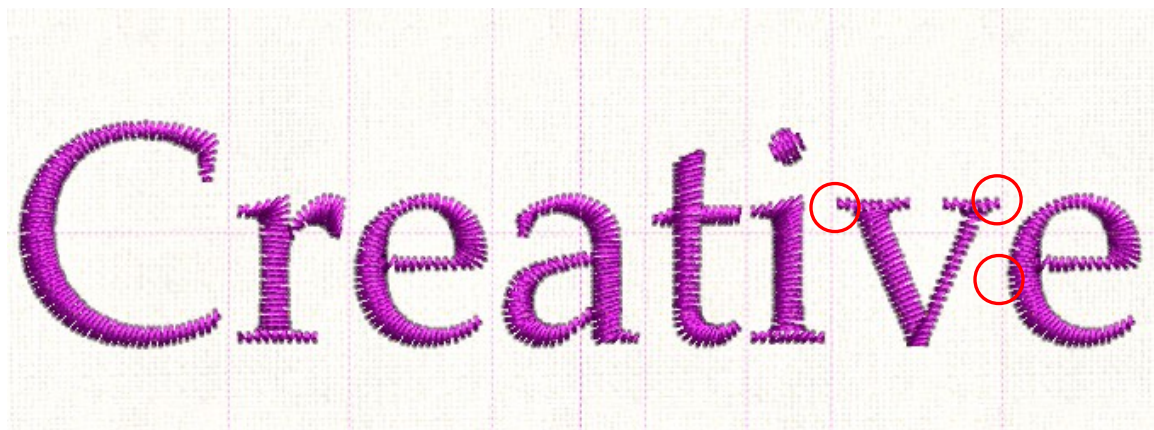
If you have any ideas about webinar topics, lessons or project ideas let us know. Email your idea to info@Creative-DRAWings.com and we'll try to talk about it soon.

Did you know?

Did you know you can manually “kern” your letters and use the align bottom tool to automatically place your letters on straight baseline?

Kerning is the process of moving two letters closer together or farther apart due to the shape of the letter, even though the letters in the word are evenly spaced.

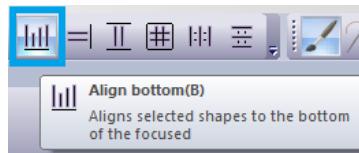
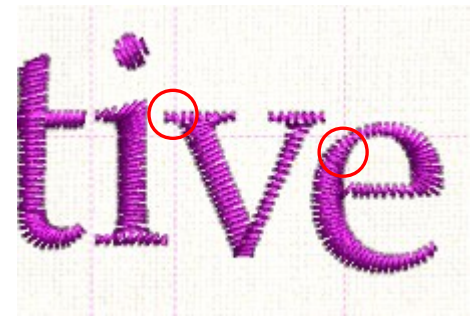
Let's look at the word Creative. In certain fonts (especially fonts with serifs), the letters “ive” look like they are farther apart than the rest of the word even though they are spaced evenly. The shape of the “v” gives an illusion of a larger distance.





This is where kerning comes into play. You can move the letters closer to one another and make it look more evenly spaced.

Once you move the letters they may not be perfectly aligned at the bottom. To adjust this, select the whole word.



Click the Align Bottom tool and all of your letters will be realigned in a straight line at the bottom of the word.



Icon Info: Align Bar

The Align Bar is a powerful set of tools that helps you line up lettering and designs for precise placement.



When you craft a phrase like “Spring is in the Air”, often you want to make several lines of text with different sizes or styles of letters for a interesting embroidery.

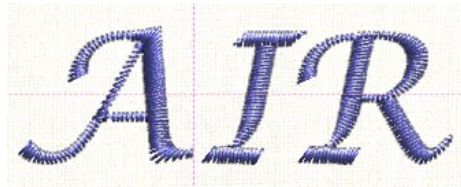


Let's try this.

First type "AIR". We are using Lucida Calligraphy, size 27. After you have "AIR" in the hoop, click on the Rectangular Selection tool to choose the word. Change the color of the word.

For manual kerning you must Break Apart the lettering so each letter is individual. To Break Apart, make sure the word is selected. Right click. Choose Break Apart.

Move the "A" slightly away from the "I".
Select the whole word and then click Bottom Align to make sure the lettering is aligned correctly.






Once the letters are kerned and aligned as you wish, you need to group the letters back together so "AIR" is considered one word not 3 letters. Select all of the letters. Right click. Click Group.


Type in the rest of the phrase:

"Spring is"	Lucida Calligraphy	20 mm	Bold
"in the"	Lucida Calligraphy	15 mm	

Change the colors of the words as you wish.



Go to the Rectangular Selection and select all three parts. Click on the Align Left , Centers Vertically , and Right . See which alignment you like the best for your use.

Finally adjust the spacing between the lines in the phrase. Because of the “g” in Spring and the “h” in the, you may wish to space this manually. Try Equal Vertical Spacing  and see what you think. If you want to move the words closer together, just click and drag the words you want to move. Then Align Left, Center or Right again.



See how to add the flower buds to your phrase, click on the link to our Youtube video.

<http://www.youtube.com/watch?v=6VqL9UmuOn4>

Use the Alignment tools for all of your lettering and design alignment needs.



Enjoy!
The Creative DRAWings® Team
Where Embroidery Magic Begins ...

