



Picture This! Create Beautiful Picture Frames with Creative DRAWings®

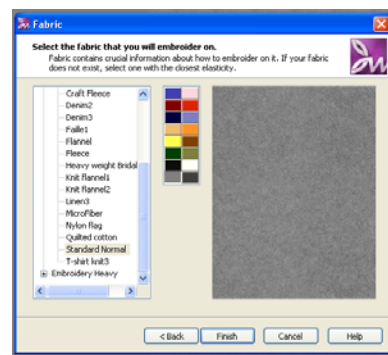
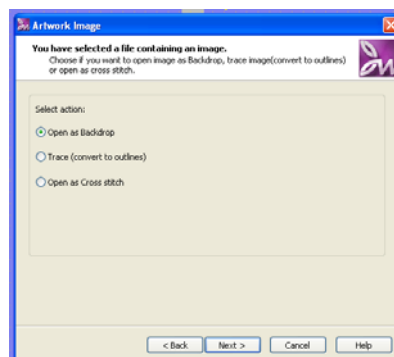
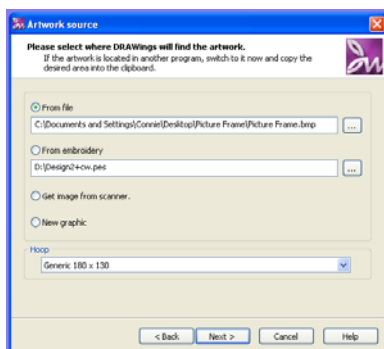
Supplies Needed:

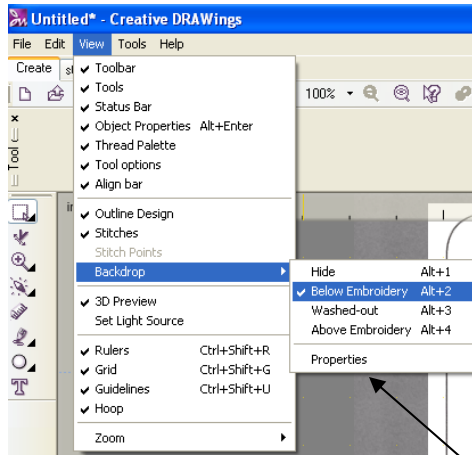
- Creative DRAWings®
- 5" x 7" Piece of fabric
- Fusible Heavy Cut-Away Stabilizer
- 5" x 7" Acrylic Frame + Photo
- Mega Sheen Thread
- Picture Frame Artwork (download at the website)
- Temporary Sticky Spray
- Schmetz Gold 90/14



These make cute gifts for any occasion!

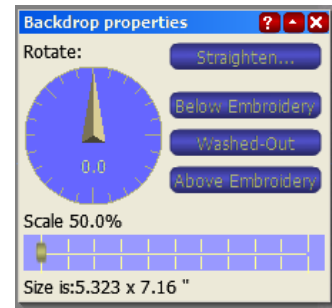
1. Open Creative DRAWings®. In the new design window, click **Create New**, then **Next**. In the artwork source box, Choose **From File**, and locate the picture frame artwork that you have downloaded from the website. Select **Generic 180 x 130** for the hoop size. **Click Next**.
2. The Artwork Image box will appear. **Select Open as Backdrop**. **Click Next**.
3. In the Fabric Selection Box, Choose **Standard Normal** as your fabric type. **Click Finish**.





4. We will need to set our Backdrop settings to View Below Embroidery. Go to **View, Back Drop, Below Embroidery**. Now we will be able to see our backdrop that we will be using as our guidelines when creating our embroidery.

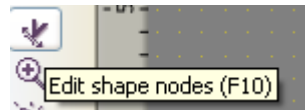
Go to **Backdrop properties** and scale your image all the way down using the slider.



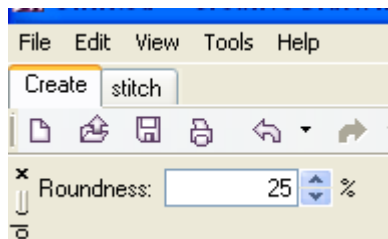
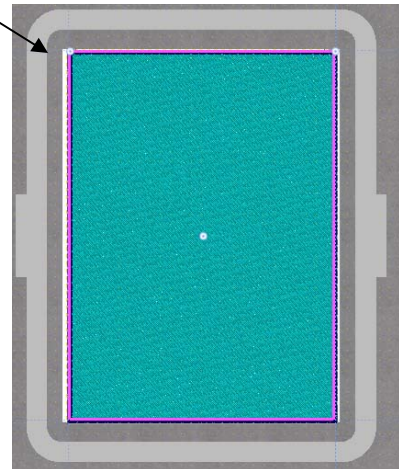
5. Select the **Create Rectangle tool** located on your left-hand side toolbar. **Click and drag** a rectangle over the outer most part of our backdrop. Now your design should look something like this.



6. Click on the **Edit Shape nodes tool** in your tool bar.



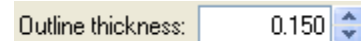
(Your design must be selected when you do this)



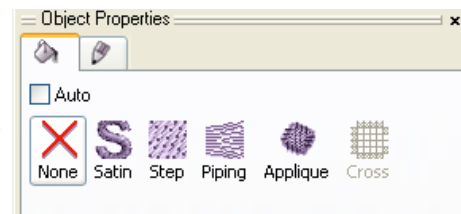
In the upper right hand corner a Roundness option will appear. **Change the percentage from 0 to 25.**

This will round all four corners of our rectangle for us evenly. How cool is that? No need to manually round them with nodes.

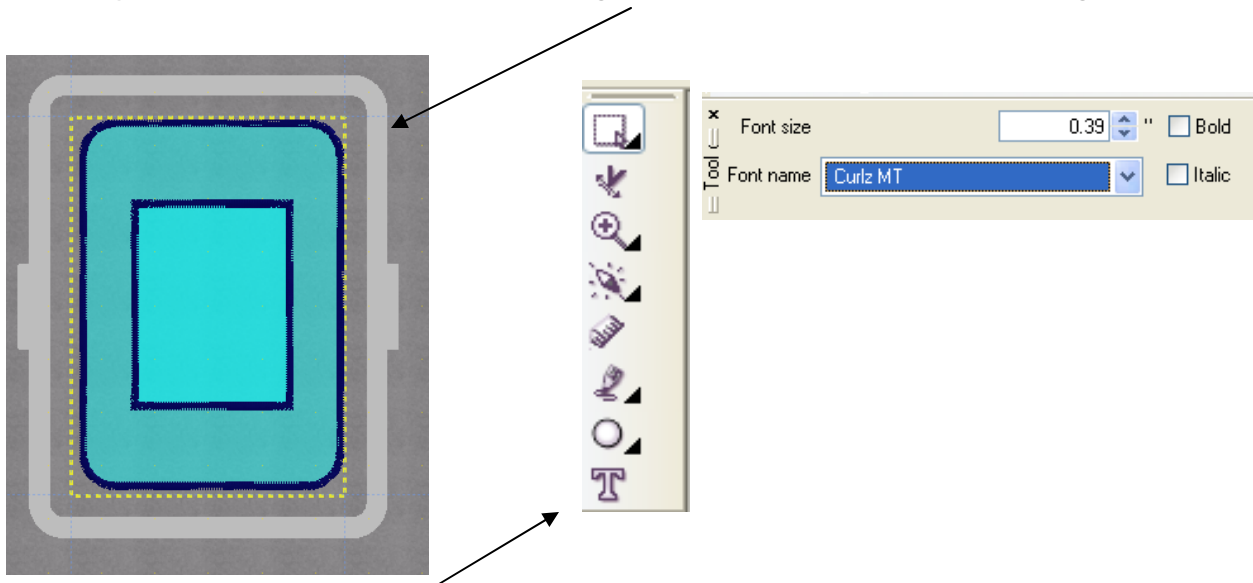
7. With the rectangle selected, change the outline thickness of our satin stitch to **.150**



In the **Object Properties Box**, change the fill to **none**. We are going to use our fabric to take place of the fill.



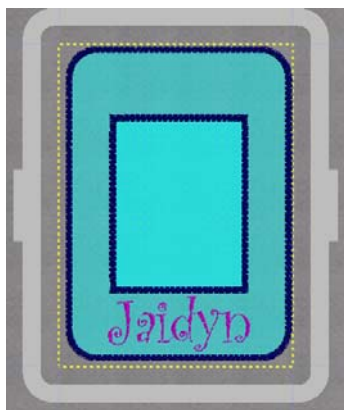
8. Click on your **Create Rectangle Tool**. Click and drag a smaller rectangle following our backdrop. **Change the Roundness percent back to 0.** **Change the fill to none.** Your design should now look something like this.



9. **Click on your text tool** located on the left hand side tool bar. At the top of the screen choose the **font style** you would like to use. Then **click on the lower half of your design**. **Type the name** you would like in the picture frame. The font I used was **Curlz MT**. You can size your name to fit in the lower section by clicking a corner and dragging it out while it is selected.

10. At this time, you can change the colors of your satin stitch borders and your font if you would like. Just select the object that you want to change and click on a color chip located at the bottom of the screen.

11. Save your design! **Go to File, Save As**, and choose the format your machine uses.



1. Hoop up a piece of Tear-Away stabilizer in your 5"x7" hoop.
2. Set your machine up for embroidery with your newly created design.
3. Take your 5"x7" piece of Fusible Heavy Weight Cut-Away Stabilizer and iron it on to the back of your 5"x7" fabric.
4. Apply Sticky Spray on the back of your fabric and place on top of stabilizer that is already hooped up.
5. Embroider your design! When it is done, trim carefully around the outer edge of your satin stitch. Do the same for the inside, where your picture will go.

If you accidentally cut into your stitches, put some fray block on that area and smooth the loose threads down. The fray block will hold your threads in place and prevent any further fraying.

Now you can slip your embroidered frame and your photo into the 5"x7" clear acrylic frame.

