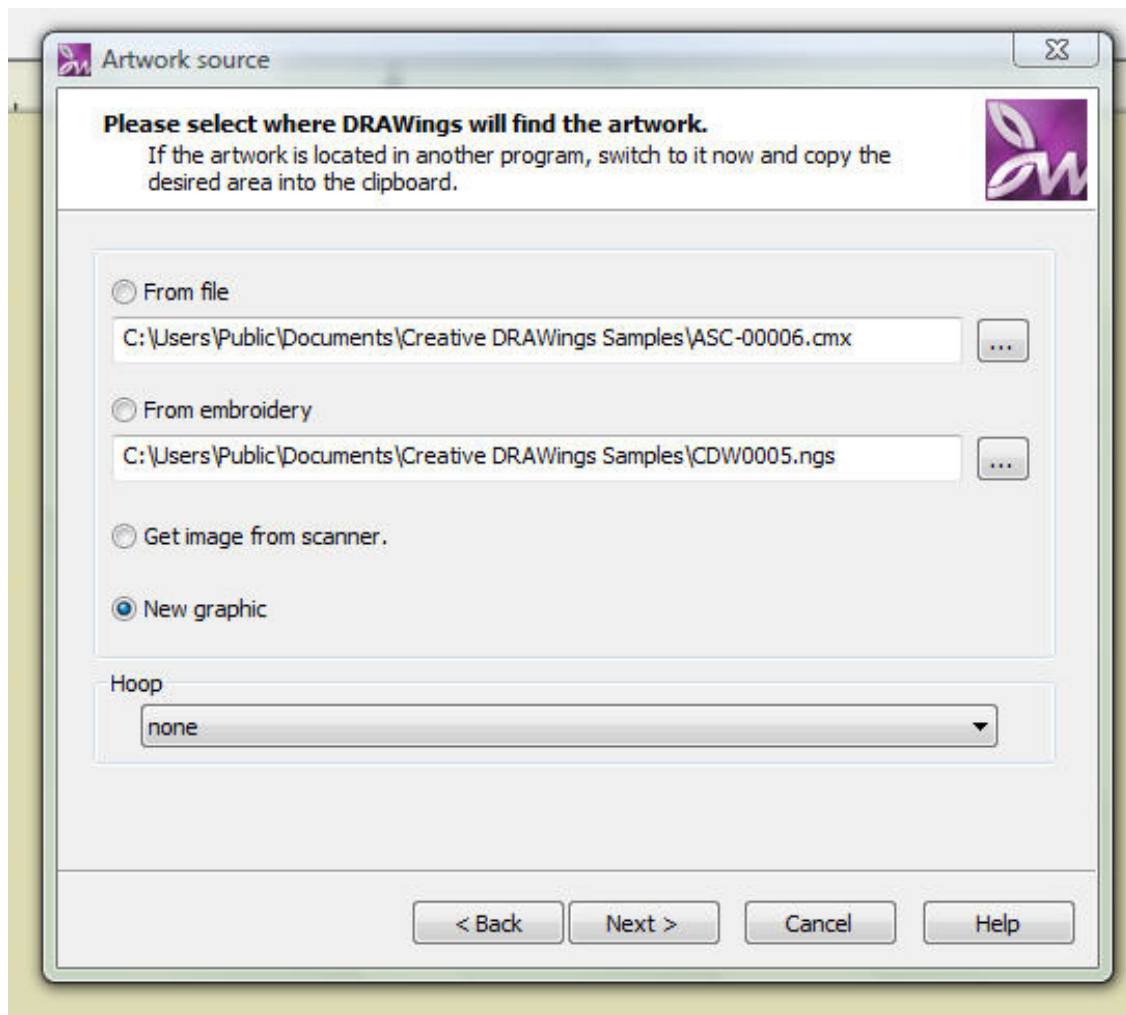
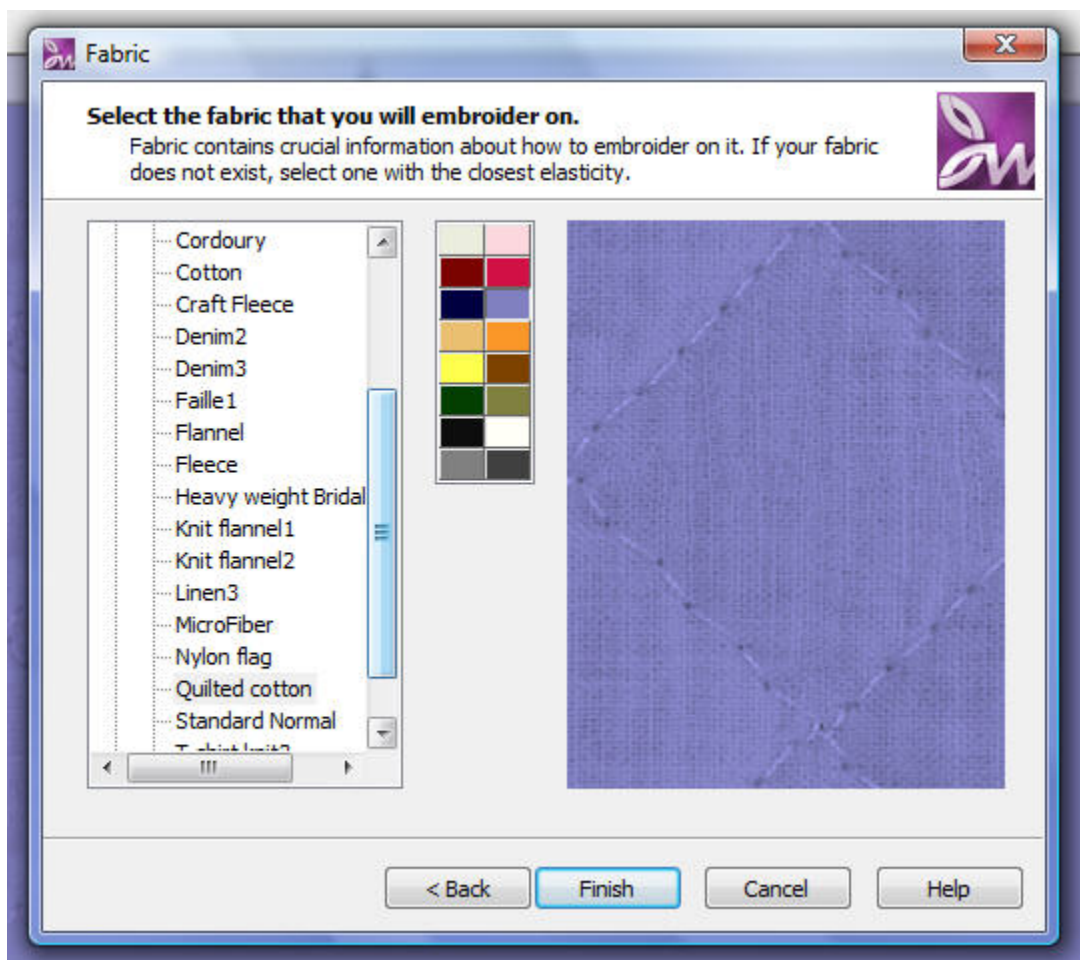


Potholder Purse

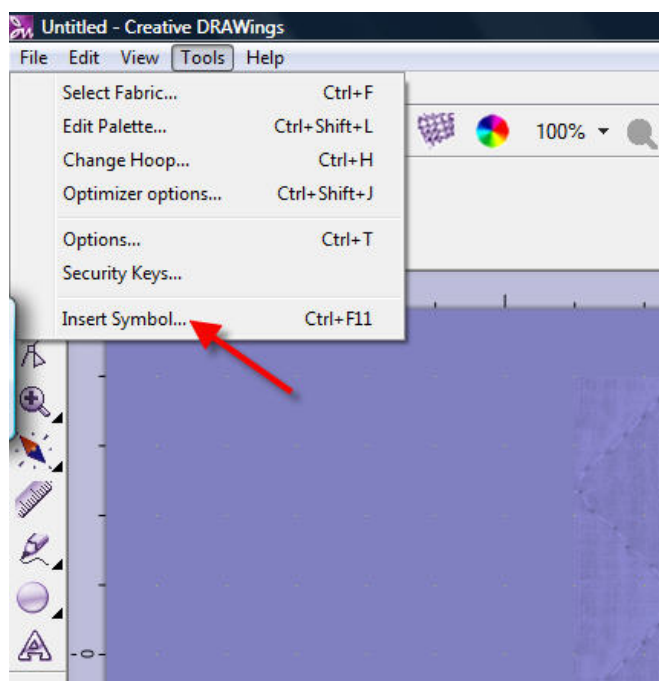
1. Open Creative DRAWings®.
2. Left click on *Create new* on the new design menu.
3. Left click on *Next*.
4. Left click in the circle next to *New graphic*.
5. For the hoop, select *none* and then left click on *Next*.



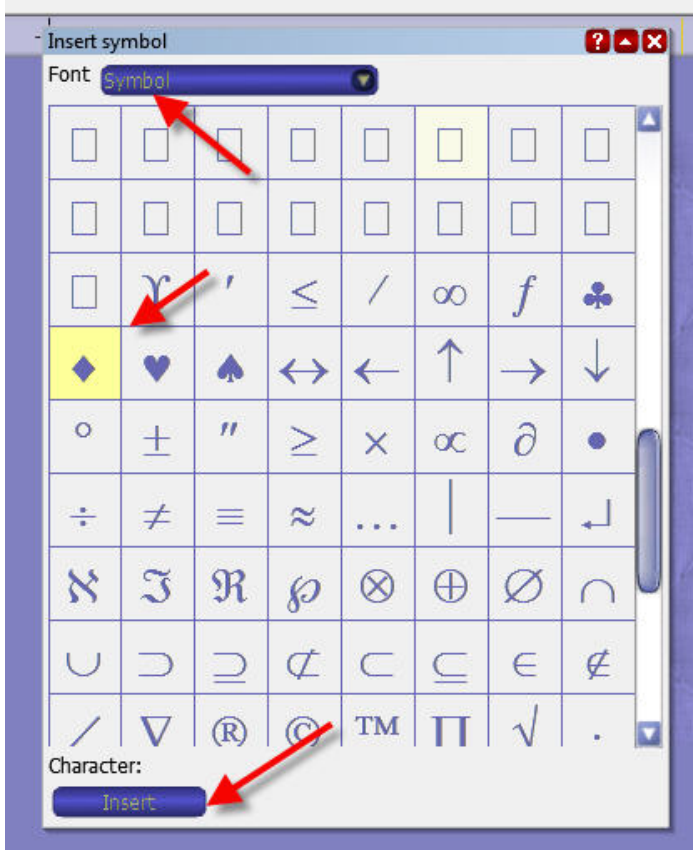
6. Choose fabric type and color. I chose blue quilted cotton from the *Embroidery normal* category. Left click on *Finish*.



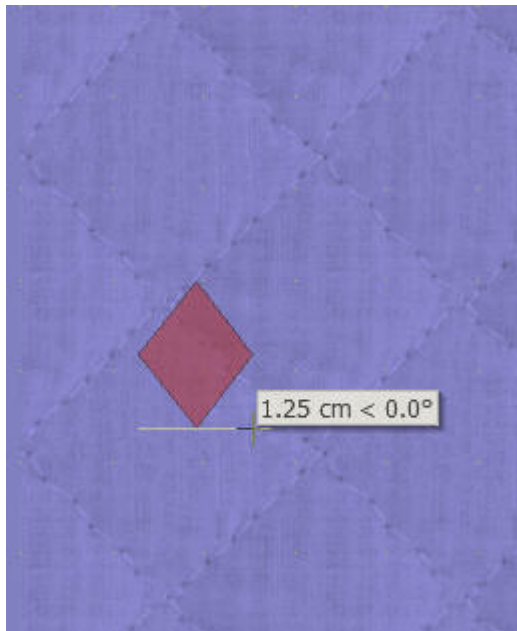
7. Left click on *Tools* on the upper left toolbar.
8. Left click on Insert Symbol. You will get the insert symbol dialog box.



9. Locate the diamond shape under *Font Symbol* and left click, then left click on *Insert*.

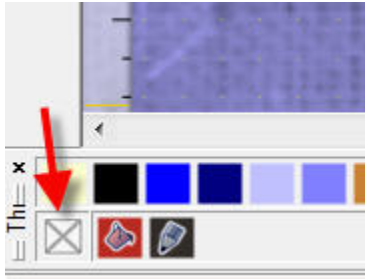


10. Left click on the fabric and drag. You will see a diamond shape being drawn. Continue dragging until the diamond shape is about 1.25cm.

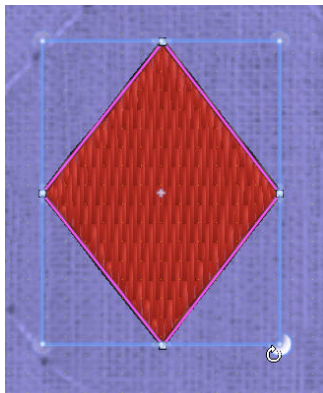


11. Close out the *Insert Symbol* dialog box.

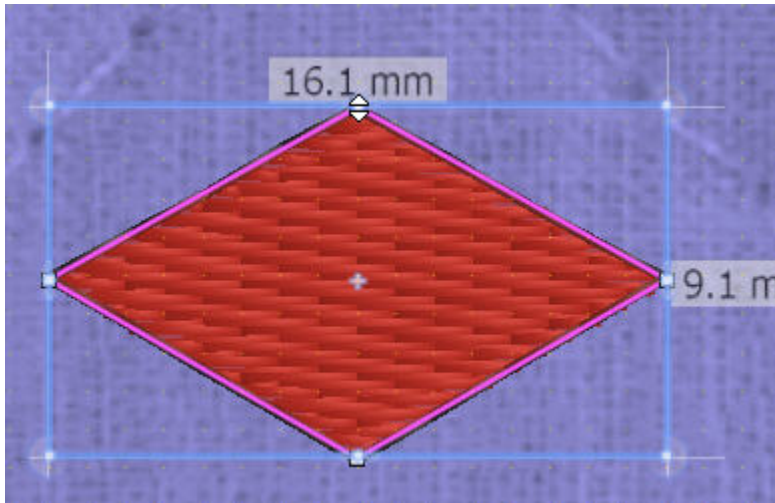
12. Select the diamond by left clicking on it. Remove the outline around the diamond by holding down the shift key and left clicking on the X at the lower left of the color bar.



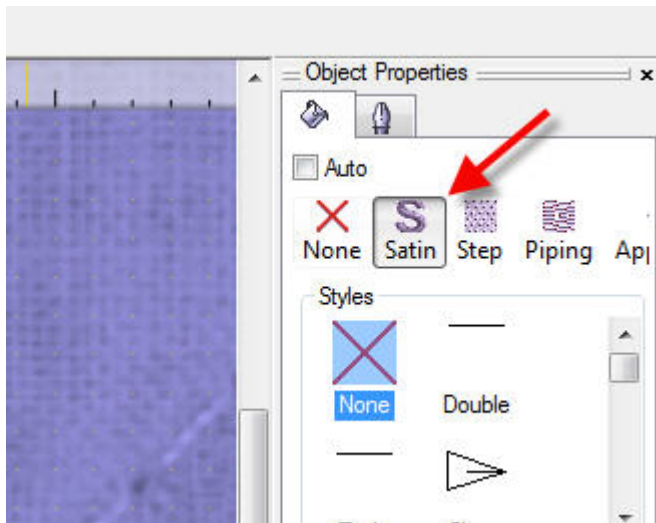
13. While the diamond is still selected, move the cursor over a corner until you see a curved arrow. While holding down the control key, left click and drag until the diamond is rotated 90 degrees.



14. After rotating the diamond, left click and drag inward on the top line until the size changes to about 16cm wide by 9cm tall



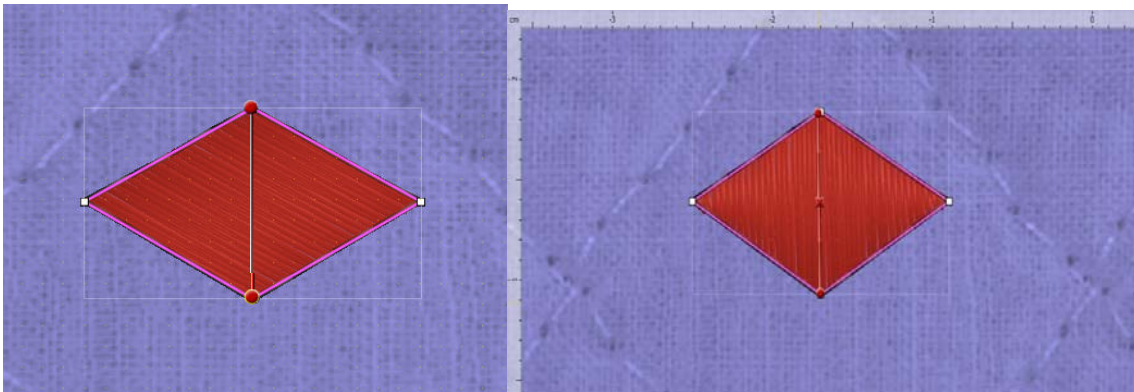
15. Change the fill stitch to a satin stitch. To do this, make sure the diamond is selected and left click on *Satin* on the Object Properties on the right-hand side of your computer screen.




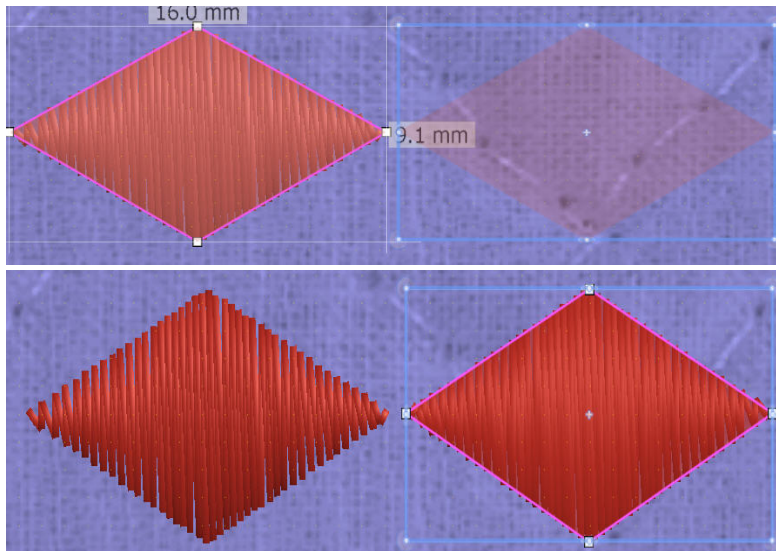
16. Change the direction of the satin stitch by choosing the *Directions* tool on the left toolbar



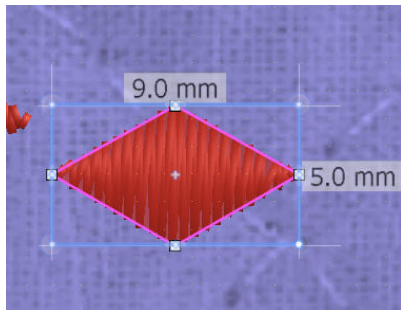
17. Click and drag from the top of the diamond to the bottom to set the direction of the satin stitch.



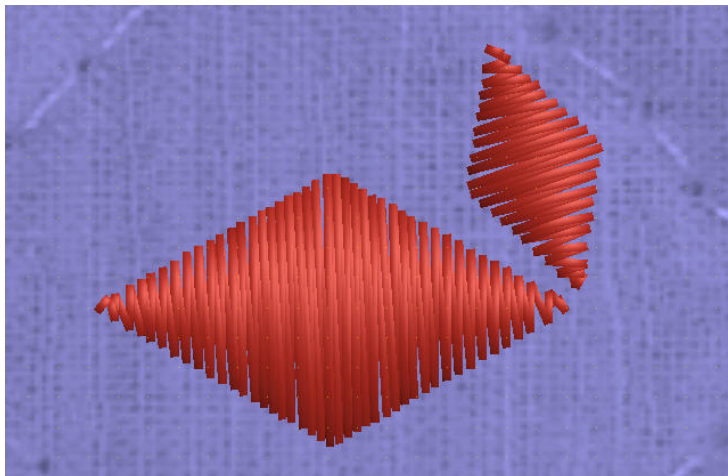
18. Copy and paste a second diamond on your screen. Left click on the *Selection* box at the top of the left-hand toolbar.  Left click on the diamond and drag it to the right. You will now see two diamonds, one that looks like a shadow of the first. While you are still holding down the left click button, stop dragging and right click. You will now have another diamond in stitches.



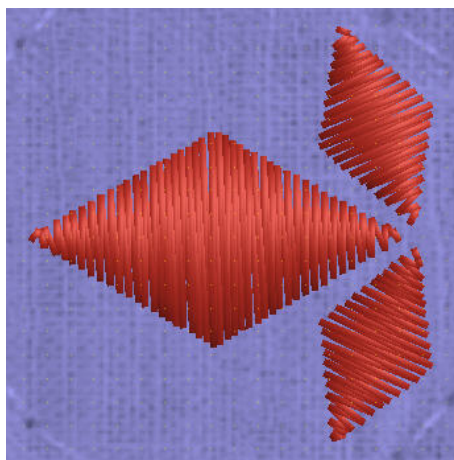
19. Left click and drag to change the size of the second diamond to 9cm wide x 5 cm tall.



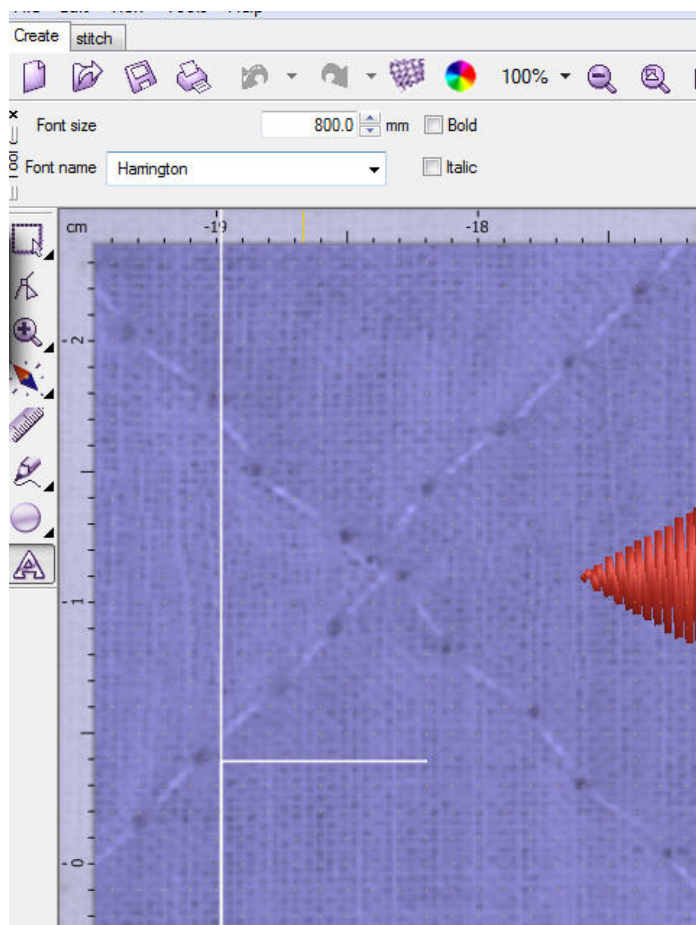
20. Use the mouse to move and rotate the second diamond until it looks like the illustration below.




21. Copy another small diamond and then move and rotate it to create a design like the one shown below. This is the design that you will place to the left and right of your monogram.



22. To create the monogram, select the *Text* tool on the left toolbar—it looks like a capital letter A.
23. Choose the letter style you want from the *Font name* menu and make the size about 800 mm. Left click on the workspace and a blinking cursor will appear.
- 24.



25. Type in the letter of your choice and then left click on the *Selection* tool at the top of the left-hand toolbar  to turn the letter into stitches.

26. To change the stitch type to satin, left click on the *Satin* button on the stitch properties

toolbar on the right side of your screen.

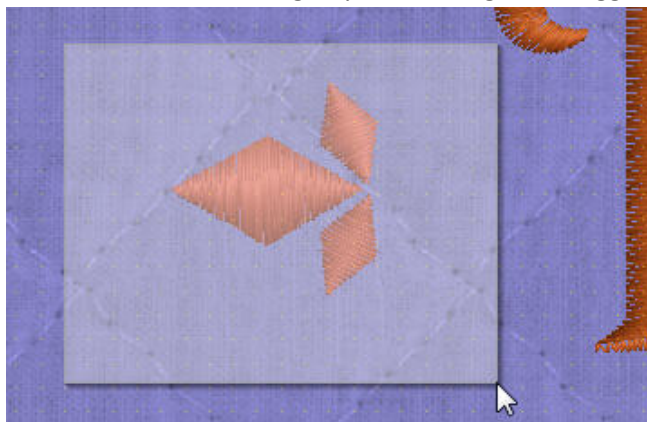


27. Remove the outline stitch on the letter by holding down the *Shift* key and left clicking on

the X button in the lower color bar on the lower left of the screen.

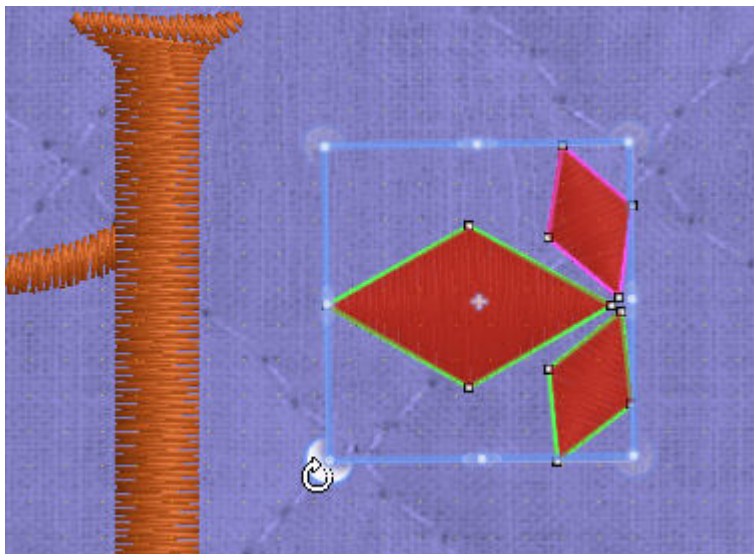


28. Select the diamond design by left clicking and dragging a box around it.

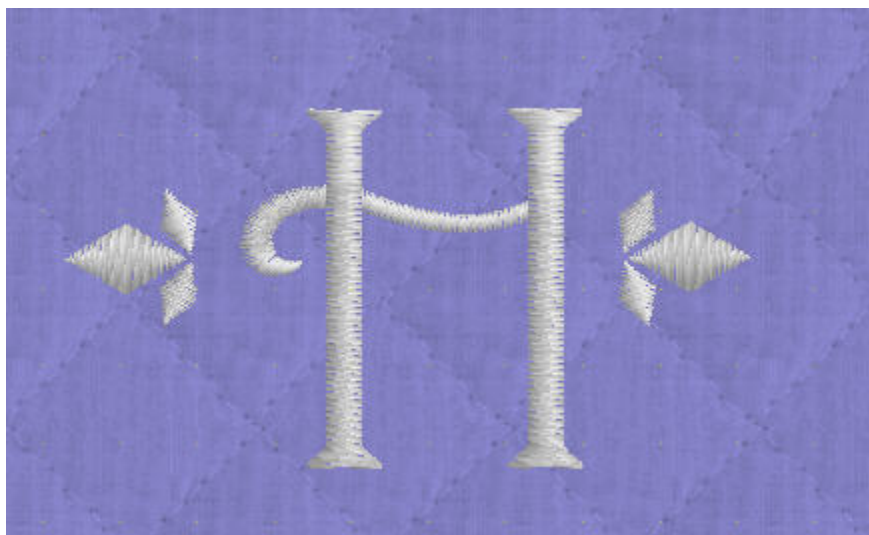


29. Copy and paste another diamond design by left clicking and dragging and, then right click.. Move the copied design to the other side of the monogram.

30. Move the cursor over the corner of the selection box until you see the curved arrow. Hold down the *Control* key as you left click and drag. Then rotate the design 180 degrees.



31. Select and move the diamond designs and monogram until you are happy with the design.



32. Change the colors as desired by selecting the stitches and left clicking on the color box on the lower toolbar. You may make it a single color or use more than one.
33. Save your design in your machine stitch format and use it to make your potholder purse or on another project as desired.

Please scroll down to page 10 for the Supply List and Sewing Instructions.

Credit: Project Created for Sew Experience Café, American Sewing Expo 2007
Project Created with the permission of Cheryl Weiderspahn, author of “Low-Sew Boutique”

Supply List:

- Schmetz Embroidery Needle Size 90
- 2 Potholders
- Sticky stabilizer
- Fringe
- Denim trim for shoulder strap
- Mega Sheen embroidery thread

Finished Size: 8” x 8”

Sewing Instructions:

1. Hoop sticky stabilizer, sticky side up, in the 126 X 100 hoop.
2. Mark the embroidery placement in the center of one potholder.
3. Hoop the potholder with the embroidery placement mark in the center.
4. Align the machine needle with the center starting point.
5. Embroider the design.
6. Remove the hoop from the embroidery arm and carefully tear the embroidery away from the hooped stabilizer.
7. Place the potholders together, making sure there is a loop at each upper corner, one on each side of the purse.
8. Topstitch the side and bottom edges of the potholders together.
9. Glue fringe to the upper edge of the purse.
10. Loop denim trim through both potholder loops and stitch or glue to secure.

