



## Creating Cards with Creative DRAWings®

Personalized cards are always more fun than store bought ones.

In this lesson we will learn how to make a Happy Birthday card. We will also work with shapes, text, and learn how to install a font!

First thing I did was go font hunting! I went to [www.dafont.com](http://www.dafont.com) and downloaded the font "Holiday Home".

### How to install a font:

Unzip the files you have downloaded, then:

**Windows Vista:** Right-Click on the font file, Click Install.

**Windows XP:** Put the font file into C:\Windows\Fonts



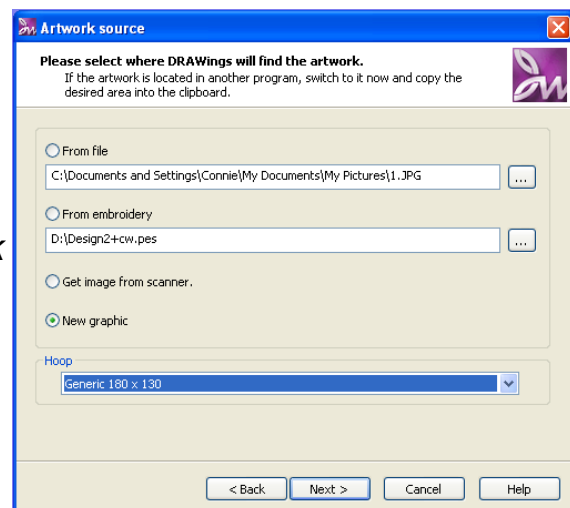
*The Holiday Home font will now show up automatically in our Creative DRAWings® program.*

Make sure you have downloaded the balloon clipart from the website [www.creative-drawings.com](http://www.creative-drawings.com) for use with this lesson.

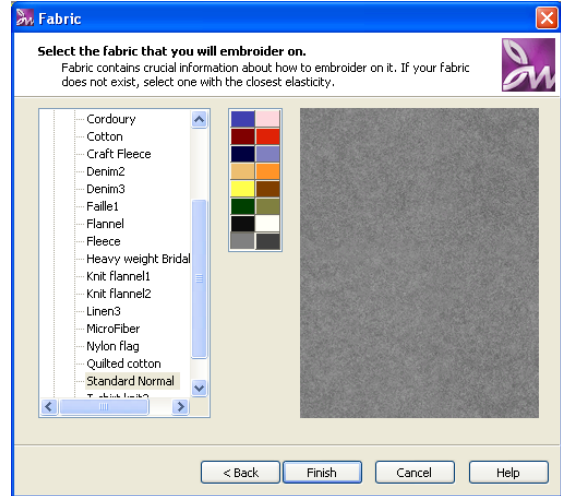
1. Open Creative DRAWings®. The New Design window will open. Select **Create New. Click Next.**

2. In the Arwork Source Window choose **New Graphic.** *Selecting New Graphic will open a blank workspace for us to create our design.*

3. For Hoop select **Generic 180 x 130.** **Click Next.**



4. The Fabric Window will appear. Choose **Standard Normal** and select a color. I chose grey because it is easy on the eyes. Click **Finish**.

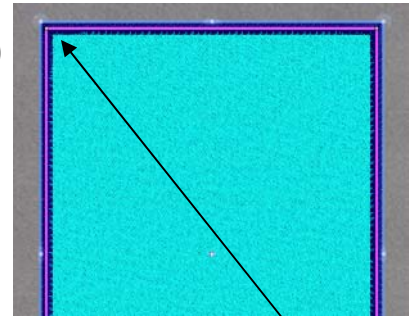


*We are going to create a design to be glued on top of a ready made generic card. I want to make my design slightly smaller than the card. The design we create will be glued to the front of our card.*



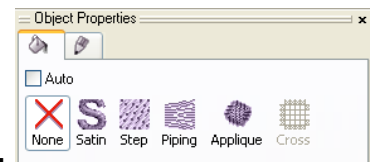
5. On the left hand side of your screen select the Create Rectangle Tool. Click and Drag a Rectangle on the screen.

My card measures about 6.75inches by 4.50 inches. So I am going to size my rectangle accordingly.



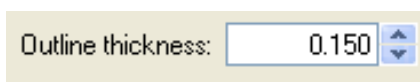
6. Select your rectangle by clicking on the **Selection Tool** and then **clicking on the rectangle**. **Click on the round dot** located at the corner of your design. You can click and drag your rectangle and size it up or down. I sized mine to 3.99 by 5.40. **You can size your rectangle to fit your card best.**

7. While your rectangle is still selected, **change the fill to none**. This setting is located in the **Object Properties Box** on the right hand side of the screen.



*We are changing the fill to none because we will be using white fabric as the background instead of fill stitches.*

8. We are now left with a satin stitch border. Change the **Outline Thickness to .150**. The outline thickness preference is located at the top left side of the screen.



*If yours doesn't show up, make sure your rectangle is selected.*

9. Change the color of the satin stitch border **green**. While your rectangle is selected, **Hold down Shift** on your keyboard and **click on a green color chip** located at the bottom of the screen.



10. Now Click on the **Text Tool**. At the upper left hand corner you have the option to choose what style font you would like to use. **Click the drop down menu** and select **Holiday Home**.

*You can see that any fonts we install will automatically show up in this drop down menu. Remember, not all fonts will work nicely for embroidery. Holiday Home works nicely at the size we are about to set it at. Always embroider a test sew out before sewing directly on garment or project.*



11. Now that we have selected Holiday Home as our font. **Click inside** the rectangle. **Type Happy**. **Click Below** Happy and **Type Birthday**.

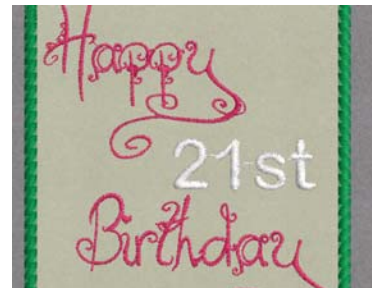
Now arrange your words so they look something like this. At this time you can change the colors of your words by **selecting them and clicking on a color chip**. Size your words the same way we did in step 6.

*My "Happy" size is 2.066 tall by 2.477 wide for your reference.*

Width:	<input type="text" value="2.477"/>	''
Height:	<input type="text" value="2.066"/>	''

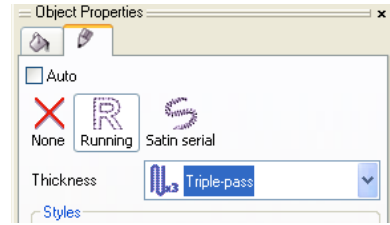
12. Click on the **Text Tool** again. Change your font to **Arial Rounded MT Bold**. (If you do not have this font, that's ok, choose a similar font) Click back on the screen.

13. **Type 21st**. **Size it down and move it** so that it fits nicely between Happy and Birthday. (Feel free to put whatever in place of the 21st)



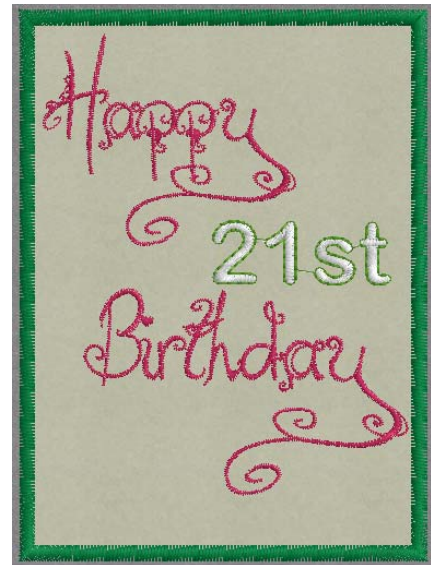
14. Lets add a lime green outline to the 21st. **Select 21st**. **While holding down your shift key on your keyboard click a lime green color chip**. This will add an outline in lime green to the 21st.

15. Change the outline to a running stitch. To do this: **Select 21st.** In the **object properties box** (located on the left hand side of the screen) click on **Running**. In the **Thickness** drop down menu select **Triple-pass**.



Now your design should look something like this:

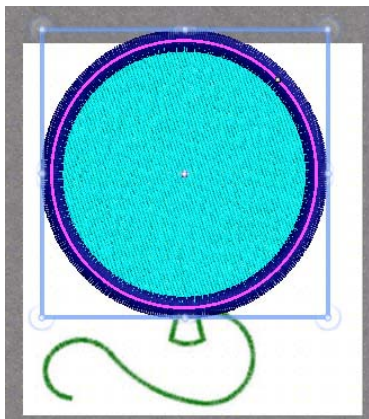
It is time to create our balloon to be added to our design.



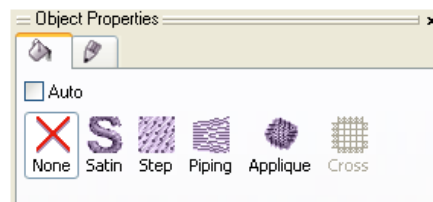
16. Click on **File**, and **New Frame**. In the New Design window click on **Create New** and **Next**. In the Artwork Source window click on **From File** and then on the 3 dots ... **Locate the Balloon** (Downloaded from [www.creative-drawings.com](http://www.creative-drawings.com)) and **click Open**. **Click Next**.

17. In the Artwork Image window click **Open As Backdrop**. **Click Next**. The Fabric Window will appear. Choose **Standard Normal** and select the color of your fabric. I picked grey. Then click **Finish**.

18. Click on your **Create Ellipse Tool** located at the left hand side of your screen. **Click and Drag out a Circle**.

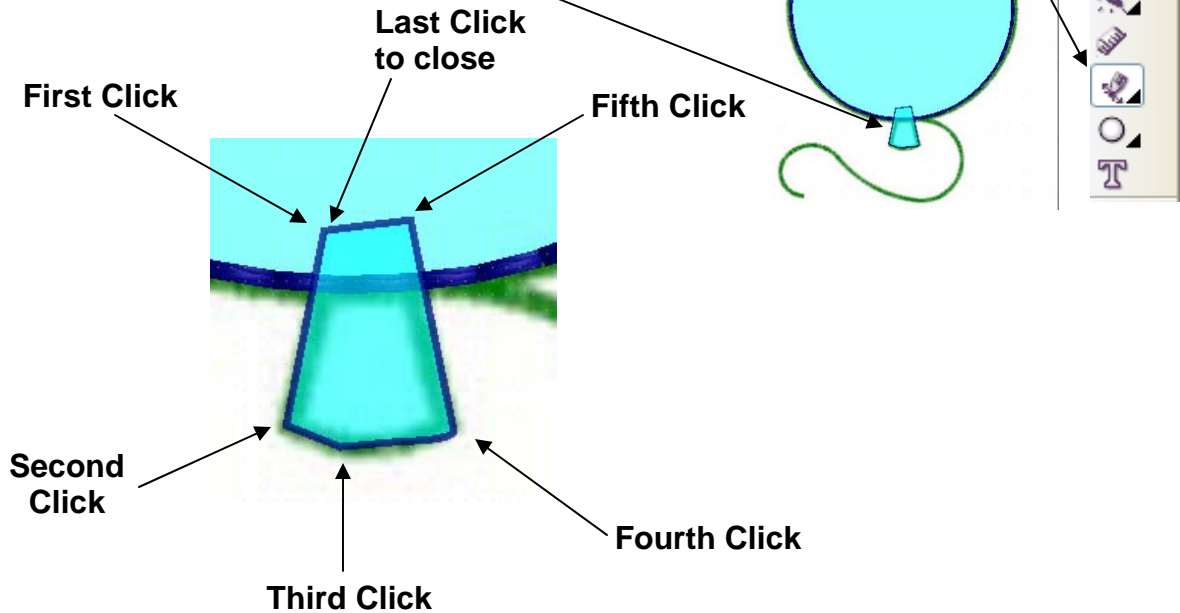


20. Change the outline from Satin to Running Stitch. (Same way as in Step 15.)



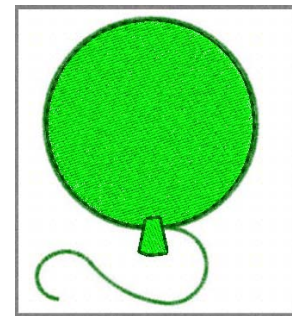


20. In your left hand side tool bar, Select **Create Beizer Shapes**. Using your mouse, click around the bottom of the balloon to create this shape.



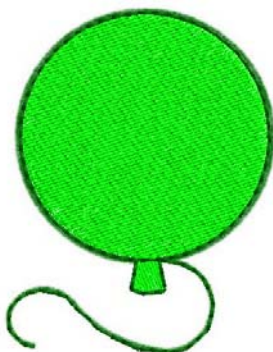
21. Change the outline to **running** and the **thickness** to **triple pass**. Change the color of the outline to dark green and the fill to lime green for the whole balloon. Your design should look like this:

The bottom piece of the ballon is on top of the main part of the balloon. We want to move the circle so it sews on top of the bottom piece.



To change the order:

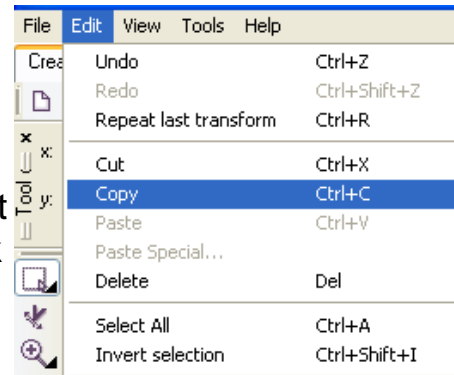
**Click on the circle** to select it, then **Right Click**. A menu will pop up **Select Order** then click on **To Front of Design**. If your outline turns into a satin stitch, change it back to the running stitch.



22. To make the tail we will use the Bezier Shape Tool. Trace over the tail. Turn it into a **running stitch** and change the thickness to **triple pass**. Make sure you change the color of the tail to match the outline of our circle.

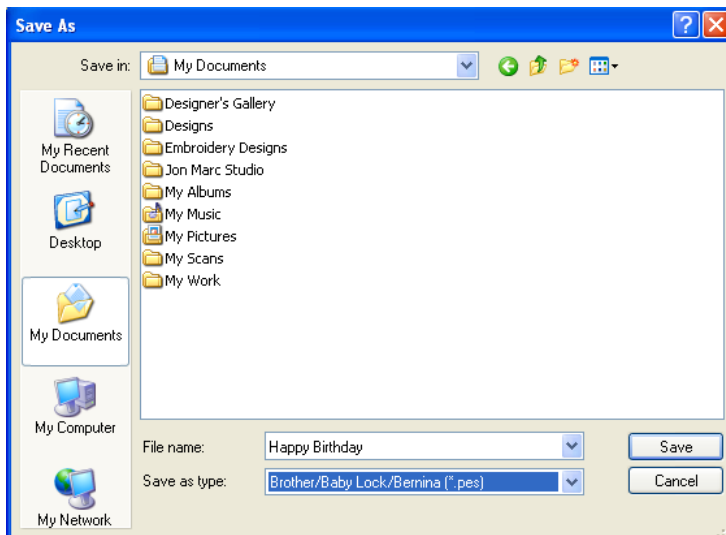
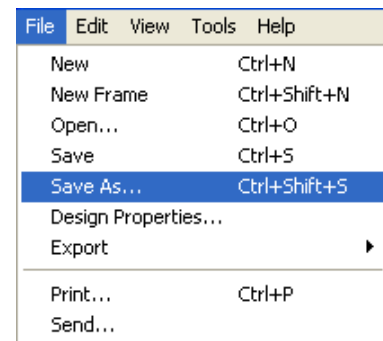
23. At the top of the screen click on **Edit** and **Select All**. This will select our whole design. Then click on **Edit Copy**.

24. At the bottom of the screen click on our first Creative DRAWings® window. Once your back at the first screen. Click on **Edit and Paste**. (Located at the top of the screen)



25. Your balloon has now been pasted onto our design. Size the balloon down and place it underneath Birthday.

26. Now it is time to save our design so we can embroider it out. Go to **File, Save As**. Locate a place to save your design and click **Save**.



Now all you have to do is embroider you design! I used white twill fabric with firmflex underneath (for added firmness). After your design is embroidered, use a rotary cutter and ruler to trim the fabric close to the satin stitch border. Get some glue and glue your design to the front of your card. Now you have a beautiful personalized card to give. Use these techniques you have learned to make cards for Father's/Mother's Day, Christmas, Birthdays, or whatever else you can think of!