



Crafting with Creative DRAWings®

There are so many ways you can create cute embroidered projects. In this class we will create an embroidery design and turn it into a pin cushion.

Make sure to download the clipart needed for this lesson at www.creative-drawings.com

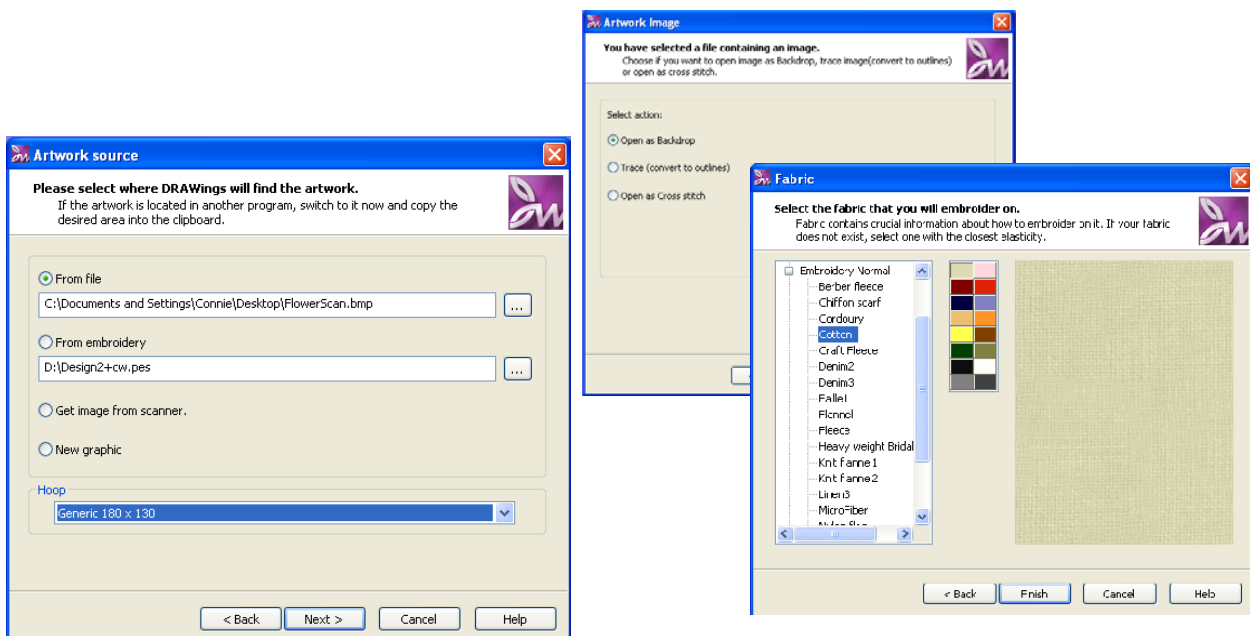


1. Open Creative DRAWings®. The New Design window will open. Select **Create New**. **Click Next**.

2. In the Artwork Source Window choose **From File**. Locate the file Flowerscan that you downloaded from the website.

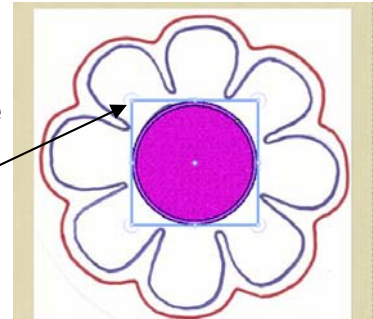
3. For Hoop select **Generic 180 x 130**. **Click Next**.

4. In the Fabric Selection Box choose **Cotton**, and select a fabric color. **Click Finish**.



5. Make sure we can see our background image. To do this go to **View, Backdrop, Below Embroidery**. You can toggle back and forth to different views as needed at any time.

6. Let's start with the inside of the flower. Using your **Create Ellipse Tool**, click and drag a circle over the innermost part of the flower. You can resize the circle by selecting it, and clicking on the corner and dragging it out.



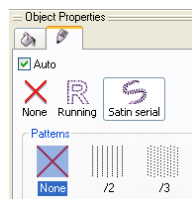
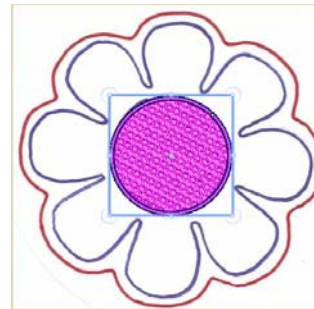
You can change the colors of things at any time by having it selected and clicking on a color chip located at the bottom of the screen. If you would like to change the color of an outline, hold down your shift key (on your keyboard) and click on a color chip.



7. It would be interesting to use a different fill for the inner area. While your circle is selected **Click on Step** and choose **#19 for the Style**.



8. Let's change our outline to **.59**. Make sure that **Satin Serial** is selected with **No Pattern**.



Outline thickness: 0.059

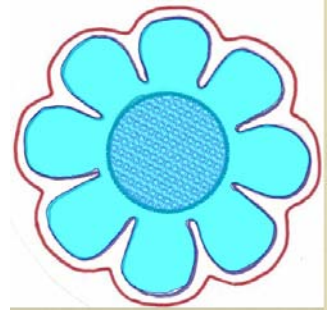
The outline thickness option will only appear when an object is selected.

9. We need to draw in our petals now (the blue lines in artwork). Lets select our **Create Outline Shape Tool** located on the left hand side toolbar found in Creative Drawings.

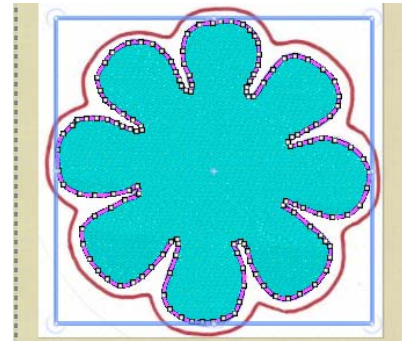
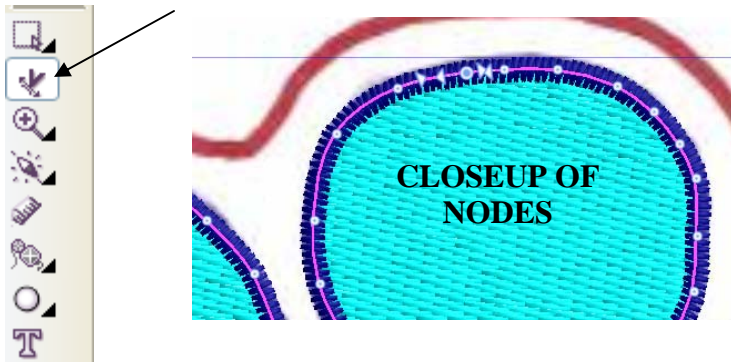
We are going to use this tool and click on the blue line following it around until we get to the end. This will create our petals.



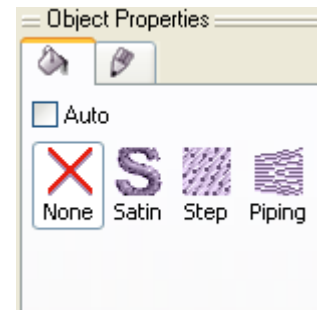
10. To use the **Outline Tool** start by making **short clicks and tracing around the petals** (blue line). When you get back to where you started click **on the first dot you made**. This will close the line and you will end up with something that looks like this.



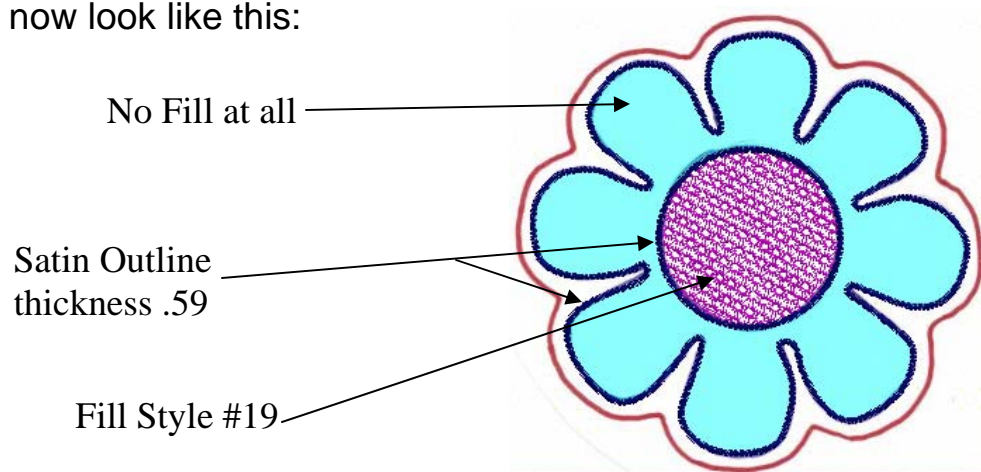
When you click on the Edit Shape Node Tool with your petals selected, Your "Nodes" (little dots) will appear. You can move them to change the shape of your petals if you have made a mistake.



10. When you are happy with the shape of your petals click go to the **Object Properties Box** and under **Fill** (icon that looks like a paintbucket) select **None**. If you do not have this option, make sure your petals are selected first.



You can see that our petals have covered up our inner section. Lets change the order so it is correct with the inner section on top. With the Petals selected, Right Click, and choose **To Back Of Design**. Our design should now look like this:



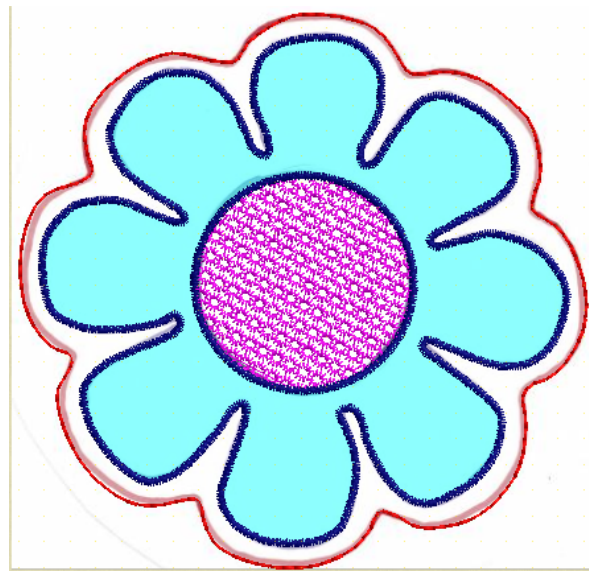
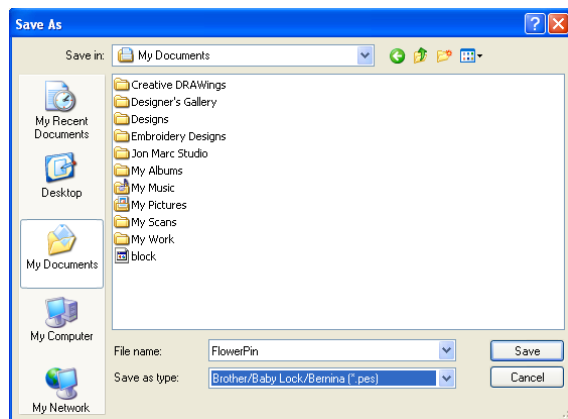
11. It's time to create our "Sewing Line". The red line will show us where we need to sew to make our pin cushion. We will make the red line a running stitch. Use the same steps we used in step #10 but instead change it to a **running stitch**.

Be sure to change the color of the **running stitch** to a color that isn't in your design. I choose **RED**. Move this outline to the back of the design like we did in step #10.

Your design should now look something like this:

Now it's time to save our design!

Go to File, Save As, and select your machine format. Click Save



Sewing/Embroidery Instructions For Creative DRAWings® Pin Cushion

Supplies:

Embroidery Machine w/Pincushion Design

5x7 Hoop

Tear-Away Stabilizer

Mega Sheen Thread

Schmetz Universal Needle size 80/12

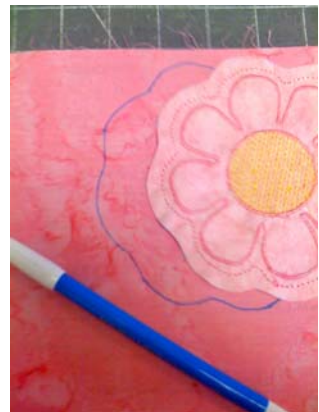
Wash Away Marking Pen, Pins, Scissors

Fabric for pincushion and Fiberfill Stuffing

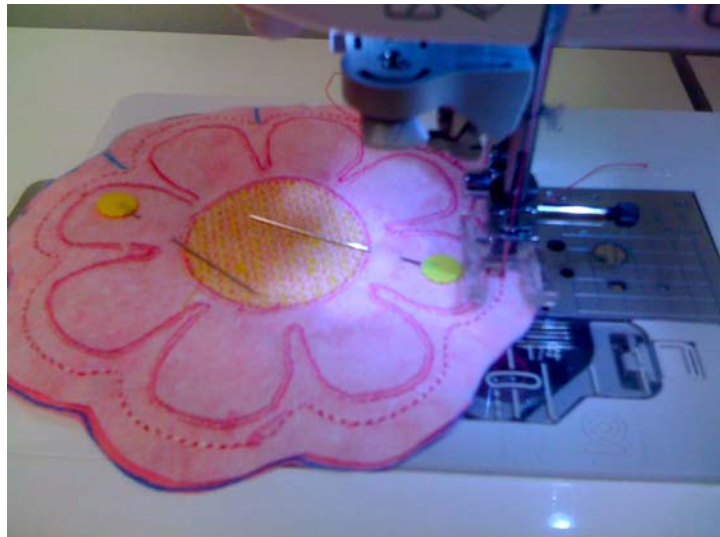
Hand Sewing Needle



1. Load the embroidery file on your machine. Hoop up a piece of cotton fabric in your 5x7 hoop with a piece of Tear-Away stabilizer.
2. Embroider your flower design created in Creative DRAWings®.
3. Cut out your flower on the running stitch, this will be our “sew line”.
4. Place the flower cut out on top of the same fabric. Trace with a wash-out marker or chalk pen. Cut out.



5. Pin the two pieces right sides together. Mark a section to indicate your start and stop sewing points. This will leave room for us to turn and stuff our pin cushion.
6. Begin sewing on the running stitch until you reach your stopping point you marked with your marker.



7. Turn fabric right side out and stuff with fiberfill.
8. Sew your opening closed. Can you tell I'm not much of a hand sew-er?

Add some pins and you are done!

