



Turn An Existing Design Into A Patch with Creative DRAWings®

Supplies you will need:

Schmetz Gold Embr. Needle 75/11

Thread

Fusible Cut Away stabilizer

Fabric for the patch background

Wash Away stabilizer

Embroidery design ready to turn into a patch

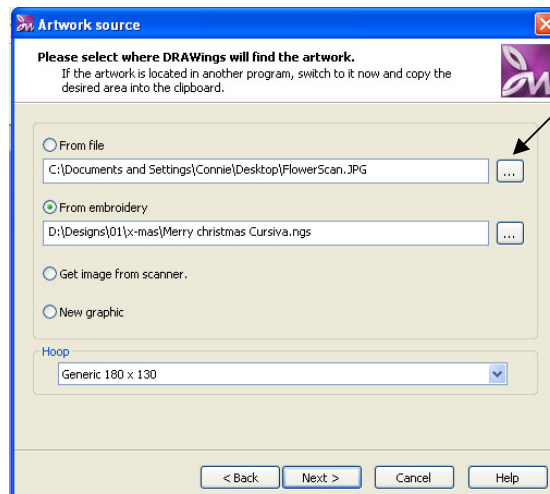
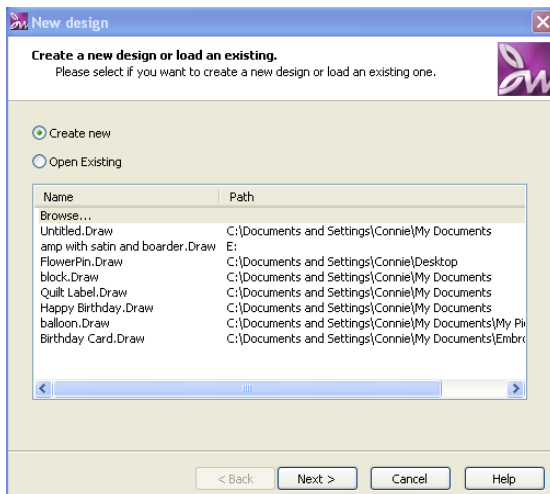
Awl



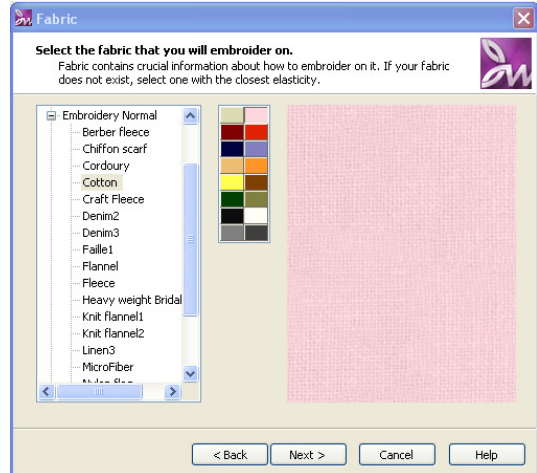
Turning designs into patches is fun and easy! Patches are quick to make and can be put on almost any garment, bag or tote. You can also use this technique to create free standing tags to put on gifts.

1. Open Creative DRAWings®. In the **New Design window** select **Create New** and **Click Next**.

2. In the **Artwork Source window** select **From Embroidery**. **Click** on the three little dots to locate the embroidery design that you would like to use. **Select what hoop size** you would like to use, **Click Next**.



3. In the **Fabric selection box**, choose Embroidery Normal, **Cotton**. Then select the color that best matches your fabric. **Click Next.**



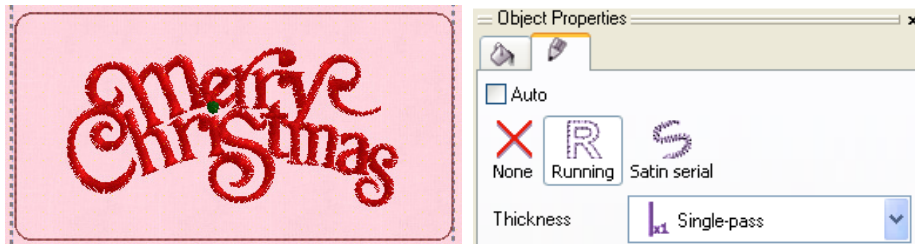
4. When the **Color Reduction window** appears you can select your thread brand of choice. Just **click Finish.**

5. Click on the **Create Rectangle tool.** **Click and drag** a rectangle around your design.



Creative DRAWings® comes with 3,000 embroidery designs. The design I chose was a Merry Christmas design. Your free designs are located on your Creative DRAWings® CD in the Designs folder.

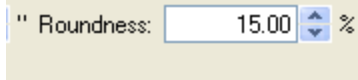
5. **Change the color of your running stitch to a color that is not in your design.** I chose pink. *This is important so that we have a definitive color change when we embroider our patch.* In the **Object Properties box** (to your right) I turned my stitch into a **running stitch with a single-pass.**



6. We do not need any fill stitches since our fabric will be our background so turn the fill off. To do this: While your running stitch is selected, Click on the X'ed out Paintbucket (lower left hand corner).



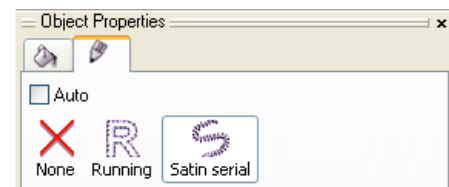
7. If the corners of your rectangle are not rounded, Select your **running stitch outline**. At the top of your screen change the roundness percentage to 15%



8. While your running stitch is still selected, Click on File, **Copy**. Then **Click File, Paste**. Change the color of this running stitch to yet another color that is not in your design

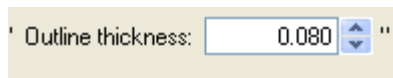
9. **Copy and Paste** your running stitch one more time. Change it from a running stitch to a **satın stitch**. Change the color to whatever you would like the outline of the patch to be.

Here is what my design looks like now:



If you are making a patch, you can skip step 10. If you would like to make this into a gift tag follow this next step:

10. Click on the **Create Ellipse tool**. Click and drag a circle in the upper left hand corner of the rectangle. Change the **outline thickness** of the circle to **.080**.



11. Click on **Edit, Select All**. Click on the resize bubble and drag in or out to resize your design.



To save your design:

Go to File, Save As, and select the format that your machine uses. Load design into your machine.

Time to stitch out our patch!

1. Hoop up a piece of clear washaway stabilizer.
2. Fuse a piece of iron on cutaway to your fabric.
3. Stitch your die line directly onto your stabilizer. Stop.



4. Place fabric on top of the die line.
5. Stitch out second die line. Stop.
6. Trim fabric away with appliqué scissors.
7. Continue with the rest of the embroidery.





8. Tear your design away from your stabilizer.
9. Use an awl to poke a hole in the center of the circle.

Your done! Since this is going to be a gift tag, we can string through some ribbon and tie onto a holiday gift.

Join our FREE yahoo group!

<http://groups.yahoo.com/group/creativedrawings>