

Creating Puffy Foam Designs with Creative DRAWings®

Using puffy foam when embroidering can give your designs a new dimension. In this quick and easy lesson we will learn how to create a design that will work well with puffy foam.

What is puffy foam?

Puffy foam is a product that is made specially for use with embroidery machines. It comes in many different colors. When you embroider using puffy foam, it gives your design a raised look. You might have seen this technique on sportswear and hats. Puffy foam can be found at your local specialty sewing shop, and when paired with your favorite threads, this technique definitely pops!

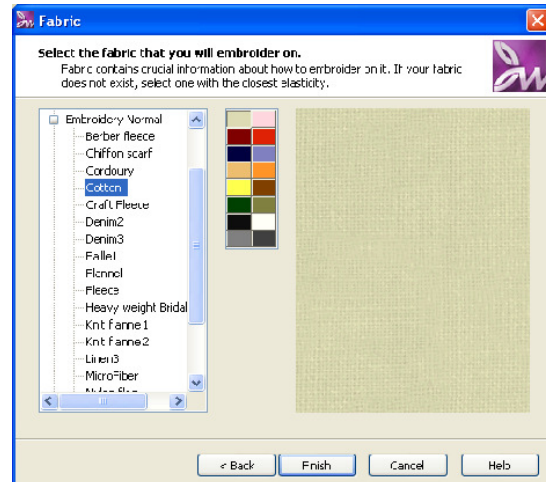
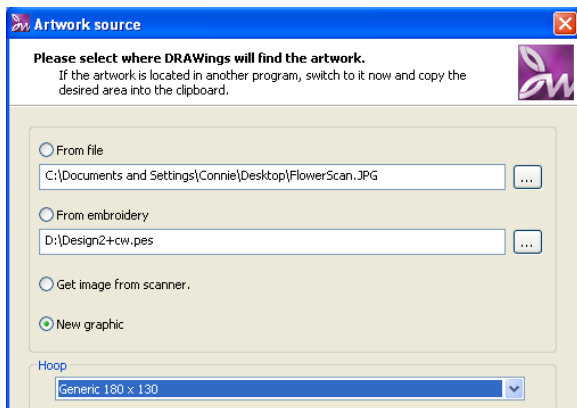
The trick to using puffy foam is using a satin stitch. Think of a satin stitch as a zig zag stitch. The thread will zig and zag while embroidering incasing the puffy foam underneath. When the puffy foam is torn away, it leaves your design raised and puffy.

Supplies you will need:

Schmetz 80/12 Universal Needle
Thread
Puffy Foam
Hot Crystal Applicator/Heat Wand
Stabilizer

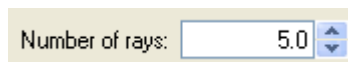


1. Open Creative DRAWings®. The New Design window will open. Select **Create New**. Click **Next**.
2. In the Artwork Source Window choose **New Graphic**.
3. For Hoop select **Generic 180 x 130**. Click **Next**.
4. In the Fabric Selection Box choose **Cotton** or your fabric of choice and select a fabric color. Click **Finish**.

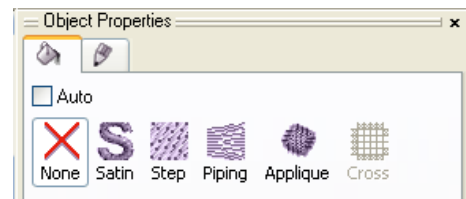


5. Click on your **Create Star Shape Tool** located at the left hand side of your workspace. **Click and drag** to create a star.

6. Lets change the number of rays of the star to 5. To do this, make sure your star is selected. At the top of the screen, **change the number of rays to 5**.



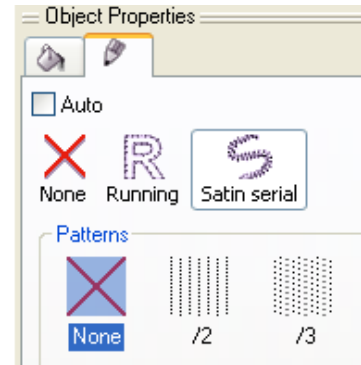
7. While the star is still selected, look at your **object properties box**. (Located to the right hand side of your workspace.) **Change the fill to none**.



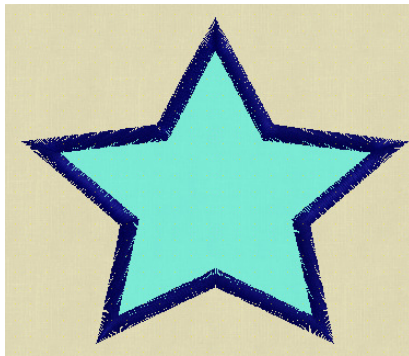
You can change the color of the star at anytime during this lesson. If you want to change a color, make sure your object is selected and click on the color chip of your choice located at the bottom of your workspace.

8. We need to make sure that the outline of the star is a satin stitch. To do this click on the pen icon in your **object properties** box. This gives options for our outline. Set the outline to **Satin Serial** and the Patterns to **None**.

If we had a pattern selected, it would flatten out our puffy foam and won't give us a raised look.

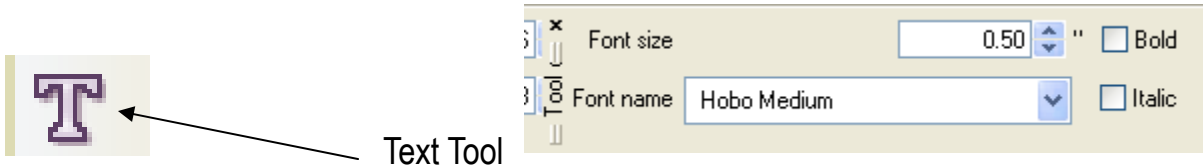


Your design should now look something like this:



When using text with puffy foam, it is important to use a font that has a nice size satin stitch (to leave enough room for the puffy foam). Fonts such as Arial Bold or the Hobo work well.

9. Now it is time to add text. At the left hand side of the workspace click on the **Text tool**. At the top of the screen select the font. I used **Hobo Medium**. Then click on your workspace. Type in **All Star**.



You also have the option to Bold your font. That would be a good idea if you were using a font such as Arial.

10. Size the letters so they fit inside the star that we created. To resize, **Select the object**. Resize bubbles will appear in the corners. **Click on a corner and drag in or out to size the object**.



Now it's time to save our design!

Go to File, Save As, and select your machine format. Click Save



Directions for embroidering:

1. Hoop project as normal.
2. Place puffy foam on top of your fabric. Start embroidering.
3. Remove puffy foam by gently pulling up and off.
4. Use a heated crystal applicator to shrink up the puffy foam nubbies that poked through the stitches. Hot crystal applicators can be found at your local specialty sewing shop.

Now that the secrets to puffy foam are revealed, give it a go!

Plus, check out the **FREE Creative DRAWings®** Yahoo Group at:
<http://groups.yahoo.com/group/creativedrawings>