

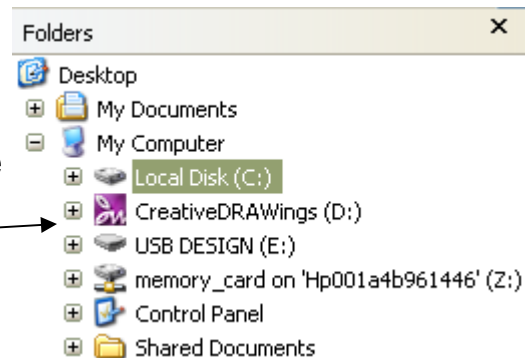


Learn How To Print Templates Using Wings Modular®

In this lesson we will learn how to print templates and information related to your design using Wings Modular®. You will also learn how to find your free designs that came with your software!

Creative DRAWings® comes with 3,000 embroidery designs! To locate your embroidery designs, insert the Creative DRAWings® CD into your computer. If an installer opens, just cancel out of it. Now follow these steps:

1. **Right click** on your **start menu**. Click **Explore**. A window will pop up. On the right hand side locate your CD drive. (Mine comes up as (D:)) You should see Creative DRAWings in the list.

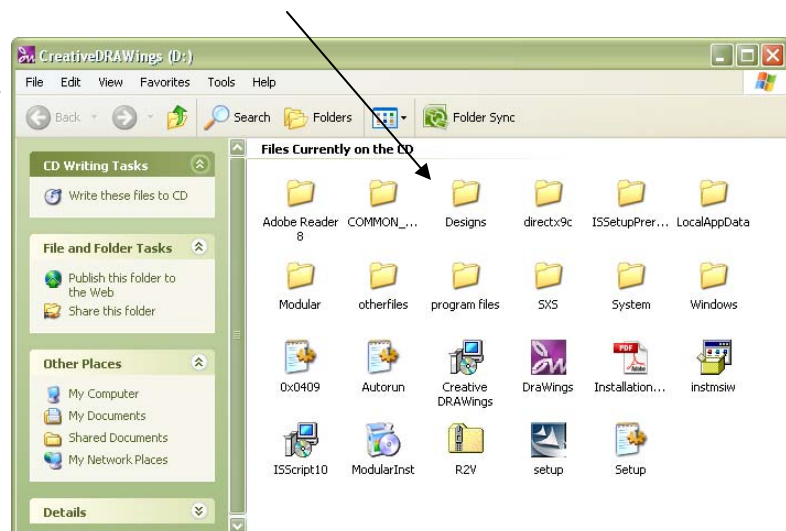


2. **Right click** Creative DRAWings and select **Open**. A new window should open. This will show you everything that is on the CD.

3. **Double Click** on the Folder named **Designs**. This is where all of our designs are located.

The designs are all located on this CD. Anytime you want to access them, you will have to insert the CD and follow these steps.

If you like, you can save them to your computer.



4. **Double Click** on the folder titled **03**. Locate the design titled **AJ-HIBIS**. If you would like to view the pictures you can go to **View** and select **Thumbnails**.

The pictures that you are seeing are called "Thumbnails". You can see the way these files look because we have Wings Modular® installed. The files are actually .NGS files which are also known as Wings Modular files.



5. Once you have located the design, AJ-HIBIS, **double click** on it. This will open Wings Modular®.

6. Our design is now open in Wings. The first thing we are going to do is change the design options to show us our design in inches. To do this click on **Tools** (located at the top of the screen), then select **Options**.

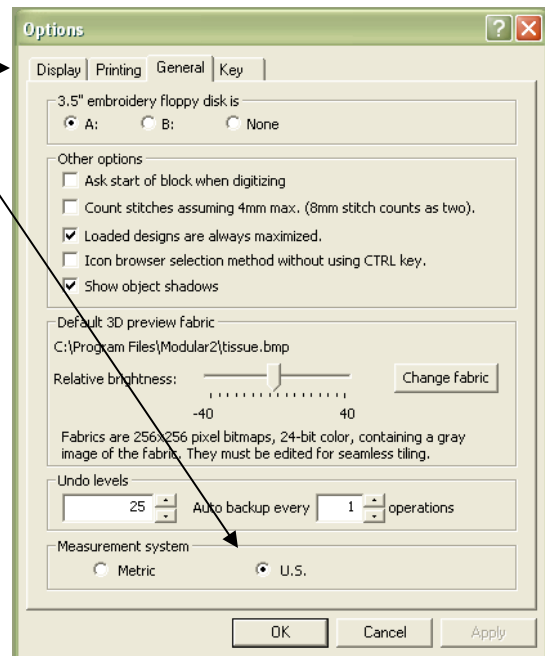
7. **Click** on the **General Tab**. Then **click** in the **U.S.** bubble to switch to Inches. When you are done, click OK.

Now we can see how large our design is in Inches easily, Just look in the bottom left hand corner of your screen.

Width:4.941 " Height:4.768 " Stitches:8113 Objects:59

You can also see how many stitches are in your design.

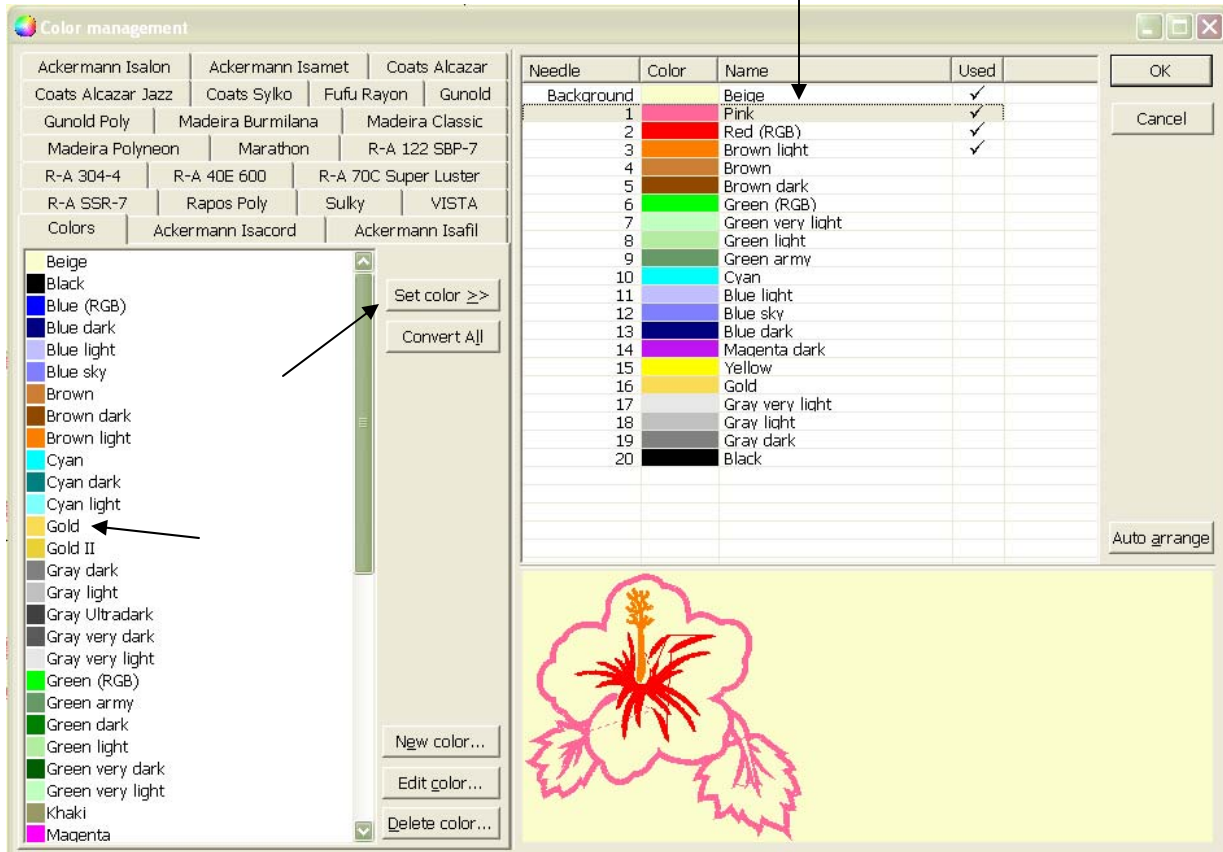
If you like, you can change the colors of the design easily. In the upper left hand corner click on the color manager.



When the color manager opens, you will see many options. The only options we are concerned with at this time are changing thread colors.

Now that you're in color manger, lets change some colors! The list below shows the names of the colors we are using in our design. Currently the colors being used are: Pink, Red, & Brown Light.

I would like to change the Brown Light to Gold.



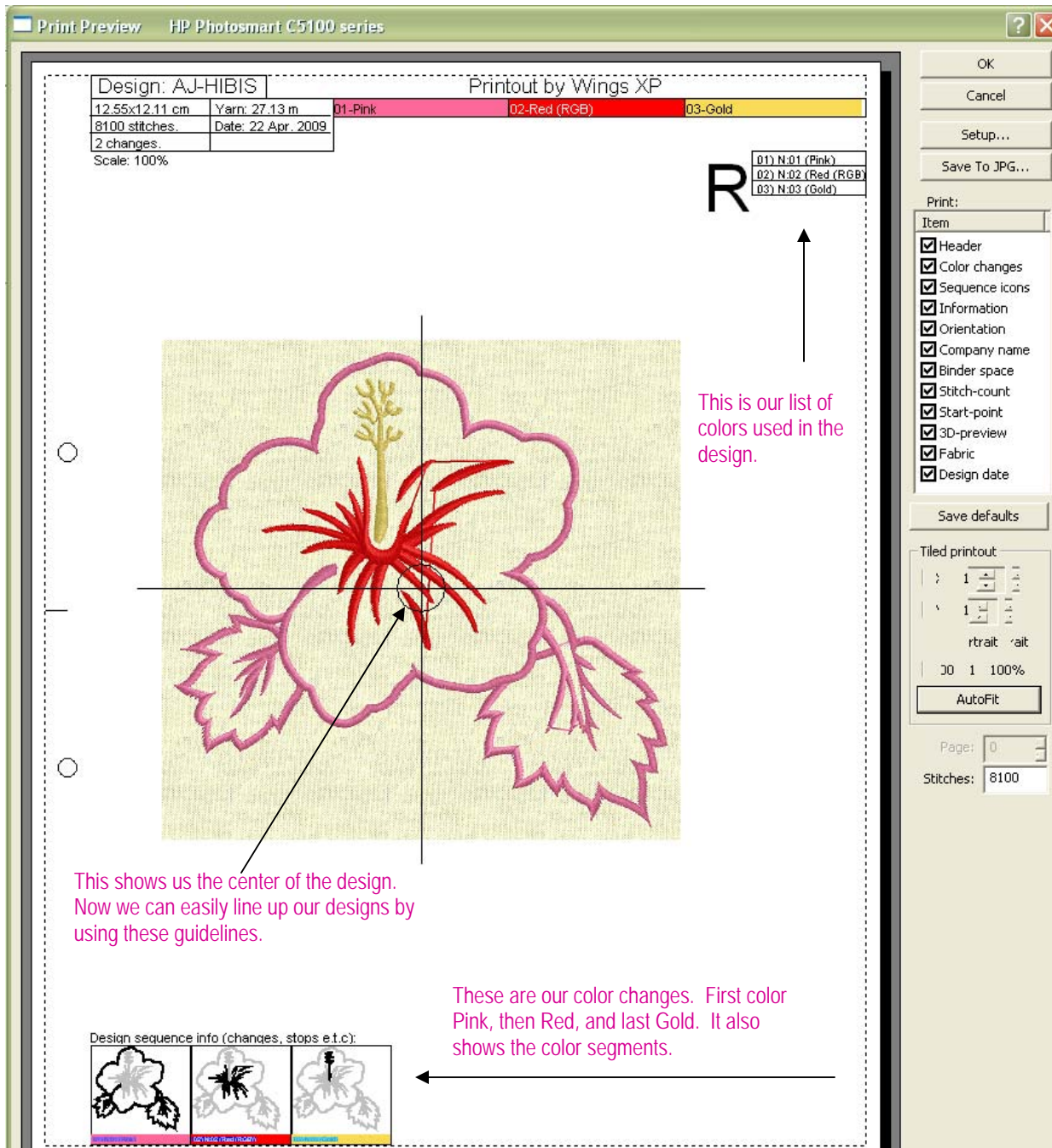
8. To change the color, **Click on Brown Light**. Then select a new color to use in its place. **Click on Gold** in the left hand side. Then click **Set Color**. You can repeat the same steps to change any of the other colors in the design. When you are done, **Click OK**.

Now it is time to print our template.



9. Go to **File**, then select **Print** from the drop down menu. Our Print Preview screen will open.

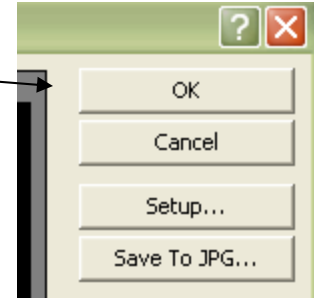
Our Print Preview Screen should look something like this:



This is what we need to know for this lesson. Later on, we can go into more detail. If you would like to learn more about this now, you can look it up in your Creative DRAWings® Manual.

To find your manual: Go to **Start, All Programs, Creative DRAWings**, then **Creative DRAWings Manual**. **Page 78** goes more into detail about the options.

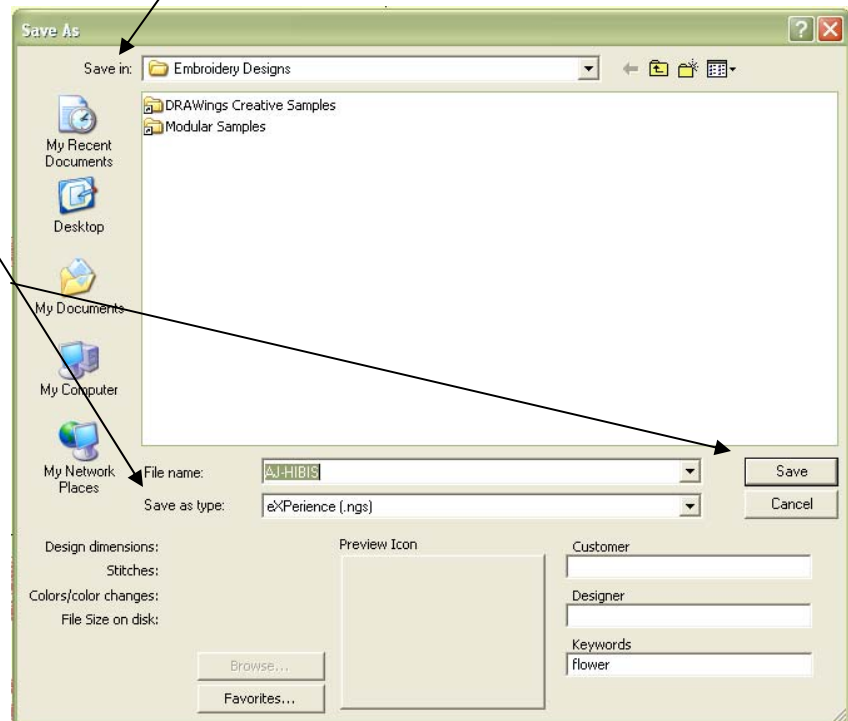
Let's print our template. **Click Ok.** Our template will now print!



Now that it has printed, we need to save our design. To do this go to **File, Save As.** The Save As window will appear. Choose a place to save your design.

Then Save in your machine format.

If you would like to come back and work on this design again. Save it as a .NGS file. This will keep all of our information for us when we are ready to come back to it.



If you would like to see how to use the template to aid you in the placement of your design, Download the Perfect Placement With Templates guide.